

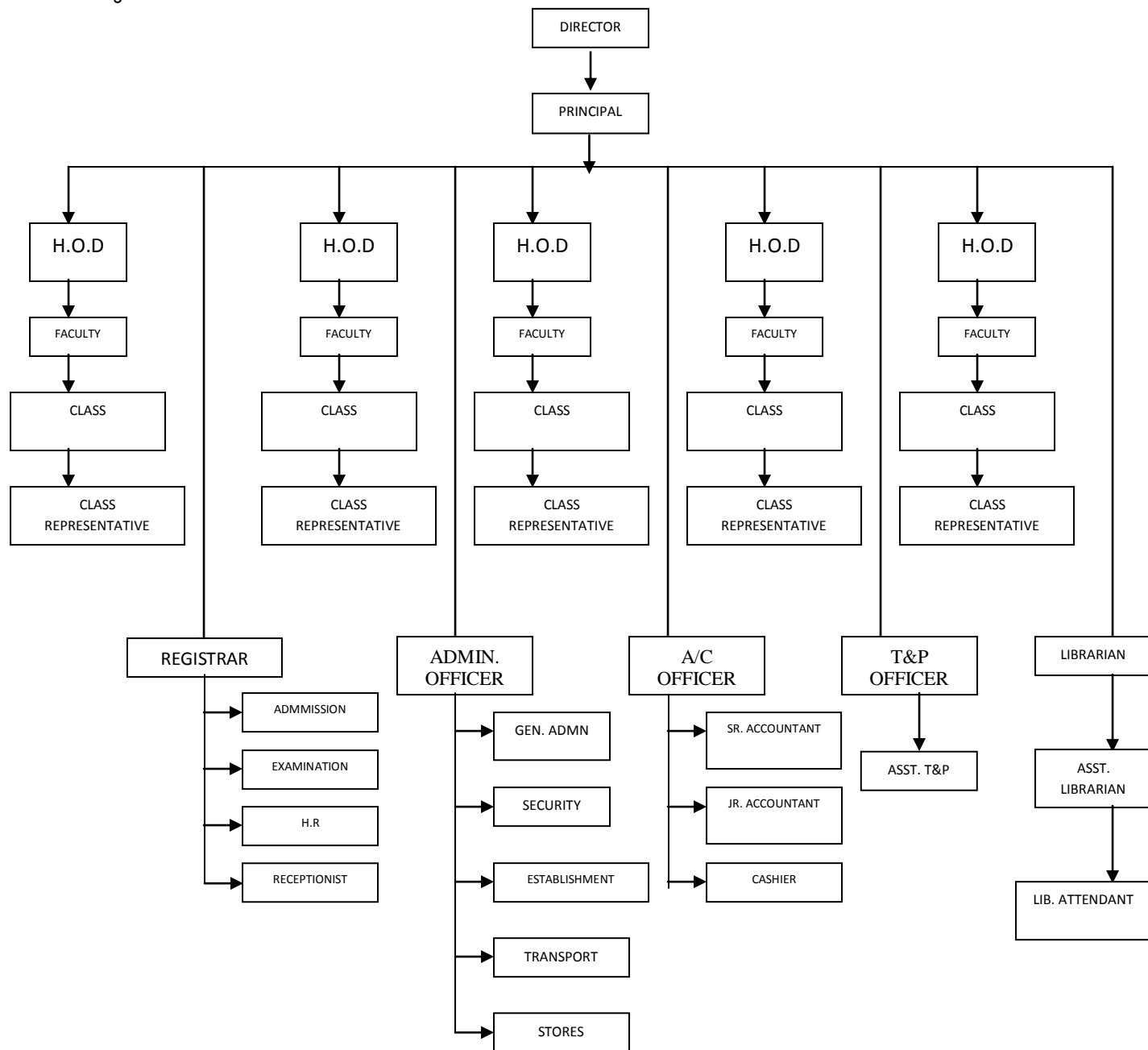
- Mr. V.K. Malik MD, MELCO Industries, Faridabad (Member)
- Mr. Rajive Chawla, President, Faridabad Small Industries Association (FSIA) (Member)
- Mr. Lakshmi Chand, (IAS, Retd. Former Secy. To Govt. of India) (Member)
- Prof. (Dr.) C.K. Nagpal, Principal (Echelon Institute of Technology) (Member)
- Mr. Prabhat Aggarwal, B.Tech, (IIT Delhi) (Entrepreneur) (Member)
- Mr. Attar Singh, (Industrialist) (Member)
- Mr. R.K. Gupta, B.Sc. –Engg. (Industrialist) (Member)
- Mr. T.D. Garg, (Industrialist) (Member)

8. Frequency of meetings & date of last meeting Normally Once in Quarter
Academic Advisory Body

S.No.	Name	Designation
1	Prof. (Dr.) Sudhir K Agarwal	Director, Echelon, Faridabad
2	Prof. (Dr.) K.S. Rao	IIT, Delhi
3	Prof. (Dr.) S.K. Gupta	IIT, Delhi
4	Prof. (Dr.) Mrs. Keya Dharamvir	Ph.D, IIT Kanpur, Prof. Punjab University, Chandigarh
5	Mr. Prabhat Aggarwal	B.Tech (IIT, Delhi)
6	Mr. Deepak Mittal	B.Tech (IIT, Delhi)
7	Prof. D.K. Chugh	Dean, Admn., Echelon, Faridabad
8	Prof. (Dr.) S.S. Mudgal	Professor In-charge (Student Affairs)

Frequency of meetings & date of last meeting Normally Once in Quarter

9 Organizational Chart



10. Student feedback mechanism on Institutional Governance/faculty performance

Course counselor & Students meeting held in every week. Course Counselor & Class Representative Meeting with the Director held Thrice on every month to discuss academic affairs, Faculty meeting with the Director is held twice in a month to discuss academic affairs. One student from each branch is a member of departmental academic committee. System of feedback from students and faculty separately every month.

11. Grievance redressal mechanism for faculty, staff and students:

System of open form, suggestion book, interaction between students and faculty is encouraged and resolve grievance.

12 Name of the Department* Computer Science & Engineering
 Course B.Tech
 Level UG / PG UG
 1st Year of approval by the Council 29th June 2007
 Year wise Sanctioned Intake CAY CAY-1 CAY-2

Academic Year	Intake
2007-2008	60
2008-2009	120
2009-2010	120
2010-2011	120
2011-2012	120

Year wise Actual Admissions CAY CAY-1 CAY-2

Academic Year	Actual Admissions
2007-2008	66
2008-2009	128
2009-2010	98
2010-2011	122
2011-2012	125

Cut off Rank – General quota CAY CAY-1 CAY-2

Academic Year	Cut off Rank
2007-2008	48147-582652
2008-2009	27626-714579
2009-2010	50101-923418
2010-2011	32125-1047002
2011-2012	117755-1013353

% Students passed with Distinction CAY CAY-1 CAY-2

Academic Year	%age students passed with Distinction	
	1 st sem	2 nd sem
2007-2008	73%	76%
2008-2009	23%	36%
2009-2010	48%	42%
2010-2011	10%	26.47%
2011-2012	Result Awaited	

% Students passed with First Class CAY CAY-1 CAY-2

Academic Year	%age of students passed with first class	
	1 st sem	2 nd sem
2007-2008	27%	24%
2008-2009	47%	49%
2009-2010	45%	46%
2010-2011	60%	64.70%
2011-2012	Result Awaited	

Students Placed CAY CAY-1 CAY-2

Academic Year	Students placed
2007-2008	19
2008-2009	Not Applicable
2009-2010	Not Applicable
2010-2011	Not Applicable
2011-2012	Not Applicable

Average Pay package, Rs./Year CAY CAY-1 CAY-2

Academic Year	Average Pay package
2007-2008	2.5 lac
2008-2009	Not Applicable
2009-2010	Not Applicable
2010-2011	Not Applicable
2011-2012	Not Applicable

Students opted for Higher Studies CAY CAY-1 CAY-2

Academic Year	Students opted Higher Studies
2007-2008	Not Applicable
2008-2009	
2009-2010	
2010-2011	
2011-2012	

Name of the Department*

Electronics & Communication Engineering

Course

B.Tech

Level UG / PG

UG

1st Year of approval by the Council

29th June 2007

Year wise Sanctioned Intake CAY CAY-1 CAY-2

Academic Year	Intake
2007-2008	60
2008-2009	60
2009-2010	120
2010-2011	120
2011-2012	120

Year wise Actual Admissions CAY CAY-1 CAY-2

Academic Year	Actual Admissions
2007-2008	59
2008-2009	63
2009-2010	127
2010-2011	121
2011-2012	121

Cut off Rank – General quota CAY CAY-1 CAY-2

Academic Year	Cut off Rank
2007-2008	90502-563160
2008-2009	53789-470947
2009-2010	21536-955575
2010-2011	123332-993230
2011-2012	68560-1026984

% Students passed with Distinction CAY CAY-1 CAY-2

Academic Year	%age students passed with Distinction	
2007-2008	1 st sem25%	2 nd sem38%
2008-2009	1 st sem20%	2 nd sem39%
2009-2010	1 st sem25%	2 nd sem33%
2010-2011	1 st sem18%	2 nd sem 17.94%
2011-2012	Result Awaited	

% Students passed with First Class CAY CAY-1 CAY-2

Academic Year	%age of students passed with first class	
2007-2008	1 st sem70%	2 nd sem62%
2008-2009	1 st sem55%	2 nd sem39%
2009-2010	1 st sem49%	2 nd sem61%
2010-2011	1 st sem57%	2 nd sem 53.84%
2011-2012	Result Awaited	

Students Placed CAY CAY-1 CAY-2

Academic Year	Students placed
2007-2008	17
2008-2009	Not Applicable
2009-2010	Not Applicable
2010-2011	Not Applicable
2011-2012	Not Applicable

Average Pay package, Rs./Year CAY CAY-1 CAY-2

Academic Year	Average Pay package
2007-2008	2.5 lac
2008-2009	Not Applicable
2009-2010	Not Applicable
2010-2011	Not Applicable
2011-2012	Not Applicable

Students opted for Higher Studies CAY CAY-1 CAY-2

Academic Year	Students opted Higher Studies
2007-2008	Not Applicable
2008-2009	
2009-2010	
2010-2011	
2011-2012	

Name of the Department*

Information Technology

Course

B.Tech

Level UG / PG

UG

1st Year of approval by the Council

29th June 2007

Year wise Sanctioned Intake CAY CAY-1 CAY-2

Academic Year	Intake
2007-2008	60
2008-2009	60
2009-2010	60
2010-2011	60
2011-2012	0

Year wise Actual Admissions CAY CAY-1 CAY-2

Academic Year	Actual Admissions
2007-2008	60
2008-2009	61
2009-2010	22
2010-2011	30
2011-2012	NA

Cut off Rank – General quota CAY CAY-1 CAY-2

Academic Year	Cut off Rank
2007-2008	61622-562900
2008-2009	106599-776680
2009-2010	137585-883809
2010-2011	172617-1050852
2011-2012	Not Applicable

% Students passed with Distinction CAY CAY-1 CAY-2

Academic Year	%age students passed with Distinction	
2007-2008	1 st sem 44%	2 nd sem 45%
2008-2009	1 st sem 11%	2 nd sem 31%
2009-2010	1 st sem 40%	2 nd sem 33%
2010-2011	1 st sem 10%	2 nd sem 14%
2011-2012	Not Applicable	

% Students passed with First Class CAY CAY-1 CAY-2

Academic Year	%age of students passed with first class	
2007-2008	1 st sem57%	2 nd sem50%
2008-2009	1 st sem55%	2 nd sem57%
2009-2010	1 st sem40%	2 nd sem66%
2010-2011	1 st sem70%	2 nd sem43%
2011-2012	Not Applicable	

Students Placed CAY CAY-1 CAY-2

Academic Year	Students placed
2007-2008	24
2008-2009	Not Applicable
2009-2010	Not Applicable
2010-2011	Not Applicable
2011-2012	Not Applicable

Average Pay package, Rs./Year CAY CAY-1 CAY-2

Academic Year	Average Pay package
2007-2008	2.5 lac
2008-2009	Not Applicable
2009-2010	Not Applicable
2010-2011	Not Applicable
2011-2012	Not Applicable

Students opted for Higher Studies CAY CAY-1 CAY-2

Academic Year	Students opted Higher Studies
2007-2008	Not Applicable
2008-2009	
2009-2010	
2010-2011	
2011-2012	

Name of the Department*

Applied Electronics & Instrumentation

Course

B.Tech

Level UG / PG

UG

1st Year of approval by the Council

29th June 2007

Year wise Sanctioned Intake CAY CAY-1 CAY-2

Academic Year	Intake
2007-2008	60
2008-2009	60
2009-2010	NA
2010-2011	NA
2011-2012	NA

Year wise Actual Admissions CAY CAY-1 CAY-2

Academic Year	Actual Admissions
2007-2008	51
2008-2009	27
2009-2010	Not Applicable
2010-2011	Not Applicable
2011-2012	Not Applicable

Cut off Rank – General quota CAY CAY-1 CAY-2

Academic Year	Cut off Rank
2007-2008	98308-534091
2008-2009	61279-744315
2009-2010	Not Applicable
2010-2011	Not Applicable
2011-2012	Not Applicable

% Students passed with Distinction CAY CAY-1 CAY-2

Academic Year	%age students passed with Distinction	
2007-2008	1 st sem17%	2 nd sem26%
2008-2009	1 st sem24%	2 nd sem44%
2009-2010	Not Applicable	
2010-2011	Not Applicable	
2011-2012	Not Applicable	

% Students passed with First Class CAY CAY-1 CAY-2

Academic Year	%age of students passed with first class	
2007-2008	1 st sem67%	2 nd sem68%
2008-2009	1 st sem59%	2 nd sem44%
2009-2010	Not Applicable	
2010-2011	Not Applicable	
2011-2012	Not Applicable	

Students Placed CAY CAY-1 CAY-2

Academic Year	Students placed
2007-2008	1
2008-2009	Not Applicable
2009-2010	Not Applicable
2010-2011	Not Applicable
2011-2012	Not Applicable

Average Pay package, Rs./Year CAY CAY-1 CAY-2

Academic Year	Average Pay package
2007-2008	3.5 lac
2008-2009	Not Applicable
2009-2010	Not Applicable
2010-2011	Not Applicable
2011-2012	Not Applicable

Students opted for Higher Studies CAY CAY-1 CAY-2

Academic Year	Students opted Higher Studies
2007-2008	Not Applicable
2008-2009	
2009-2010	
2010-2011	
2011-2012	

Name of the Department* Mechanical Engineering

Course B.Tech

Level UG / PG UG

1st Year of approval by the Council 23-08-2010

Year wise Sanctioned Intake CAY CAY-1 CAY-2

Academic Year	Intake
2007-2008	NA
2008-2009	NA
2009-2010	60
2010-2011	120
2011-2012	120

Year wise Actual Admissions CAY CAY-1 CAY-2

Academic Year	Actual Admissions
2007-2008	Not Applicable
2008-2009	Not Applicable
2009-2010	65
2010-2011	116
2011-2012	125

Cut off Rank – General quota CAY CAY-1 CAY-2

Academic Year	Cut off Rank
2007-2008	Not Applicable
2008-2009	Not Applicable
2009-2010	108308-904296
2010-2011	80850-1046114
2011-2012	91278-1036597

% Students passed with Distinction CAY CAY-1 CAY-2

Academic Year	%age students passed with Distinction	
2007-2008	Not Applicable	
2008-2009	Not Applicable	
2009-2010	1st sem 23%	2nd sem 30%
2010-2011	1st sem 24%	2nd sem 22%
2011-2012	Result Awaited	

% Students passed with First Class CAY CAY-1 CAY-2

Academic Year	%age of students passed with first class	
2007-2008	Not Applicable	
2008-2009	Not Applicable	
2009-2010	1 st sem38%	2 nd sem37%
2010-2011	1 st sem53%	2 nd Sem 63%
2011-2012	Result Awaited	

Students Placed CAY CAY-1 CAY-2

Academic Year	Students placed
2007-2008	Not Applicable
2008-2009	Not Applicable
2009-2010	Not Applicable
2010-2011	Not Applicable
2011-2012	Not Applicable

Average Pay package, Rs./Year CAY CAY-1 CAY-2

Academic Year	Average Pay package
2007-2008	3.5 lac
2008-2009	Not Applicable
2009-2010	Not Applicable
2010-2011	Not Applicable
2011-2012	Not Applicable

Students opted for Higher Studies CAY CAY-1 CAY-2

Academic Year	Students opted Higher Studies
2007-2008	Not Applicable
2008-2009	
2009-2010	
2010-2011	
2011-2012	

Name of the Department*

Civil Engineering

Course

B.Tech

Level UG / PG

UG

1st Year of approval by the Council

01-09-2011

Year wise Sanctioned Intake CAY CAY-1 CAY-2

Academic Year	Intake
2007-2008	NA
2008-2009	NA
2009-2010	NA
2010-2011	NA
2011-2012	60

Year wise Actual Admissions CAY CAY-1 CAY-2

Academic Year	Actual Admissions
2007-2008	Not Applicable
2008-2009	Not Applicable
2009-2010	Not Applicable
2010-2011	Not Applicable
2011-2012	37

Cut off Rank – General quota CAY CAY-1 CAY-2

Academic Year	Cut off Rank
2007-2008	Not Applicable
2008-2009	Not Applicable
2009-2010	Not Applicable
2010-2011	Not Applicable
2011-2012	210196-1007467

% Students passed with Distinction CAY CAY-1 CAY-2

Academic Year	%age students passed with Distinction
2007-2008	Not Applicable
2008-2009	Not Applicable
2009-2010	Not Applicable
2010-2011	Not Applicable
2011-2012	Result Awaited

% Students passed with First Class CAY CAY-1 CAY-2

Academic Year	%age of students passed with first class
2007-2008	Not Applicable
2008-2009	Not Applicable
2009-2010	Not Applicable
2010-2011	Not Applicable
2011-2012	Result Awaited

Students Placed CAY CAY-1 CAY-2

Academic Year	Students placed
2007-2008	Not Applicable
2008-2009	Not Applicable
2009-2010	Not Applicable
2010-2011	Not Applicable
2011-2012	Not Applicable

Average Pay package, Rs./Year CAY CAY-1 CAY-2

Academic Year	Average Pay package
2007-2008	Not Applicable
2008-2009	Not Applicable
2009-2010	Not Applicable
2010-2011	Not Applicable
2011-2012	Not Applicable

Students opted for Higher Studies CAY CAY-1 CAY-2

Academic Year	Students opted Higher Studies
2007-2008	Not Applicable
2008-2009	
2009-2010	
2010-2011	
2011-2012	

Accreditation Status of the course Accredited / Provisionally Accredited / Not Accredited / Not eligible yet

Doctoral Courses Yes / No
 Foreign Collaborations, if any
 Professional Society Memberships
 Professional activities
 Consultancy activities

Not Eligible yet
 No
 No
 ISTE
 No
 Many consultancy activities are running with collaboration of leading IT industries
 No
 Five Students in University merit list from ECE/CSE/ME/IT/AEI/CE
 No

Grants fetched
 Departmental Achievements

Distinguished Alumni

13 Details of Teaching Staff*

Annexure-attached

14 Admission quota#
 Entrance test / admission criteria
 Cut off / last candidate admitted CAY CAY-1 CAY-2

75% through Counselling & 25% through Management
 AIEEE & Haryana State Counselling Society

Fees in rupees CAY CAY-1 CAY-2

CAY-80,000/- CAY-1-74,000/- CAY-2-51,500/-

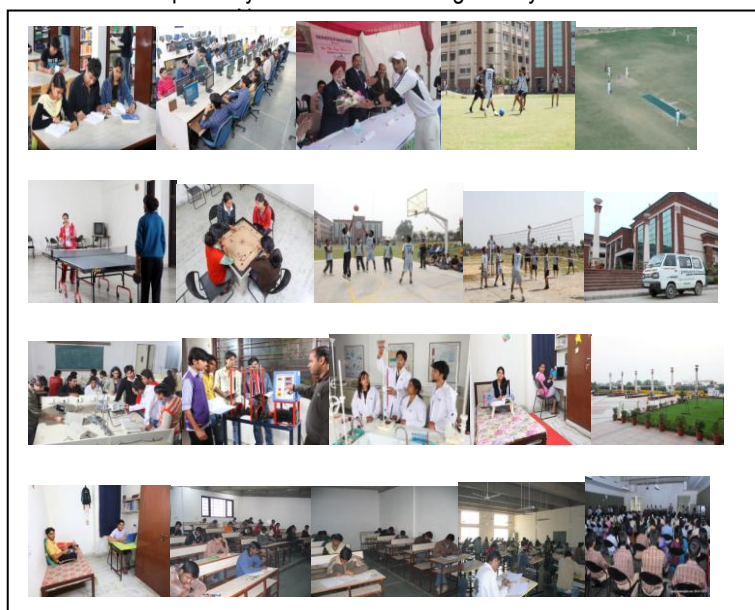
Number of Fee Waivers offered CAY CAY-1 CAY-2

CAY-2 CAY-1-9 CAY-2-11

Admission Calendar
 PIO quota Yes / No

As per Haryana State Counseling society

15 Infrastructural information^
 Classroom/Tutorial Room facilities Photo
 Laboratory details Photo
 Computer Centre facilities Photo
 Library facilities Photo
 Auditorium / Seminar Halls / Amphi Photo
 Cafeteria Photo
 Indoor Sports facilities Photo
 Outdoor Sports facilities Photo
 Gymnasium facilities Photo
 Facilities for disabled Photo
 Any other facilities Photo
16 Boys Hostel Photo
 Girls Hostel Photo
 Medical & other Facilities at Hostel Photo



17.	Academic Sessions Examination system, Year / Sem Period of declaration of results	Semester 3 Months after end semester examination
18.	Counseling / Mentoring Career Counseling Medical facilities Student Insurance	One Course counselor for the batch of 30 students One Course counselor for the batch of 30 students Yes
19	Students Activity Body Cultural activities Sports activities Literary activities Magazine / Newsletter Technical activities / TechFest Industrial Visits / Tours Alumni activities	Clubs/Society in all departments Cultural Fest organizes Inter Branch/College tournaments of Cricket, Football, Volleyball, Table tennis, Badminton in every semester Once in semester Once in semester Once in Semester
20	Name of the Information Officer for RTI Designation Phone number with STD code FAX number with STD code Email	

CAY=Current Academic Year

*Repeat this template for each department / staff.

#Repeat this template for additional quota, if any.

^Add photographs

Approval